



QUICK CHANGE



SPEEDILOK™ SMART LOCATING SYSTEM

Overview

What if you could change your setup time from hours to seconds? Now you can! The new Invert-A-Bolt™ Speedilok™* Smart Locating System gives you more for your money than any other Quick Change product on the market today.

This precision locating system similar in use to ball lock or speedloc systems but with several advantages--notably that it is low in cost, is easier to assemble and use, and that the plate thickness does not require a controlled thickness. This system consists of precision tapered posts and matching receivers and is used for quick change of plates, vises, or similar products. In addition, Kurt AngLock® "D" Series type vises (and similar) can be modified to accept the Speedilok™ receiver to provide easy on/off at the machine and positive location every time.

- Simple to install, use, and manufacture plates
- Low maintenance--nothing to get plugged and have to clean out
- No obstructions to the quick change plate surface--counter-bored below the surface
- Receiver Locator is interchangeable for locating & non-locating posts
- Requires only one type of tool for installation--hex wrench



T-Slot Version

A variation of the Speedilok™ Smart Locating System suitable for directly locating and holding from a t-slot bed or machine table is coming soon. This one of a kind product, unlike anything else on the market, facilitates a super quick change without the additional cost of specially made intermediate plates to locate/hold vises, tooling plates, etc.

Applications

Vise setups, dedicated & modular fixtures, machine table mounting, and more.

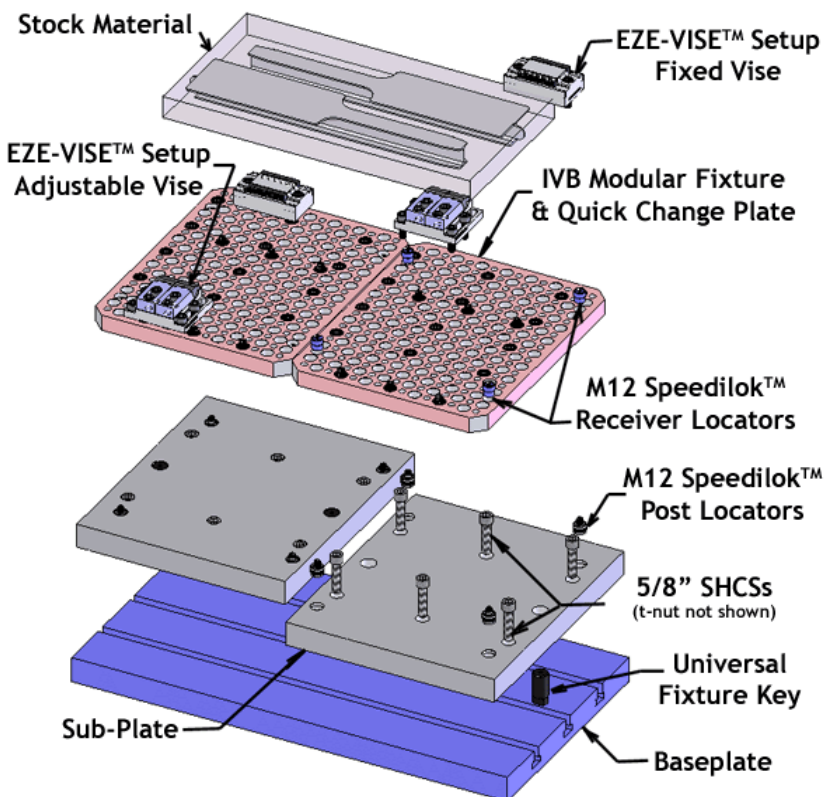
General Specifications

Material: Hardened stainless steel construction

Repeatability: +/- .0005

Requirements: Quick change plates .95" and wider, bushings. liners not required

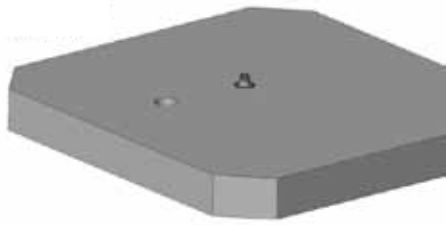
Options: M12 available now (M10 and M16 coming soon) in locating and non-locating



M12 Series available now!

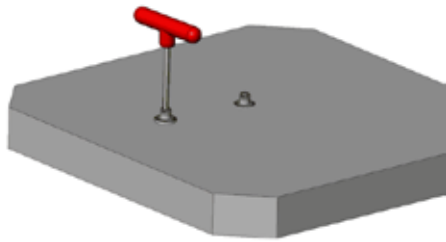


LOCATE AND HOLD IN ONE OPERATION!



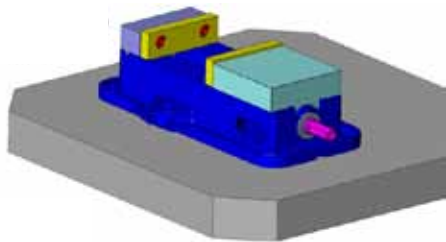
1

Begin with a baseplate, the proper number of Speedilok™ Smart Locators and Speedilok™ Receivers.



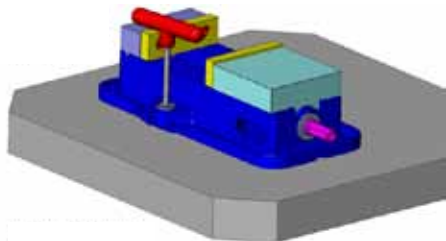
2

Install Speedilok™ Smart Locators into the baseplate using a hex wrench.



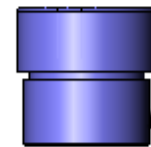
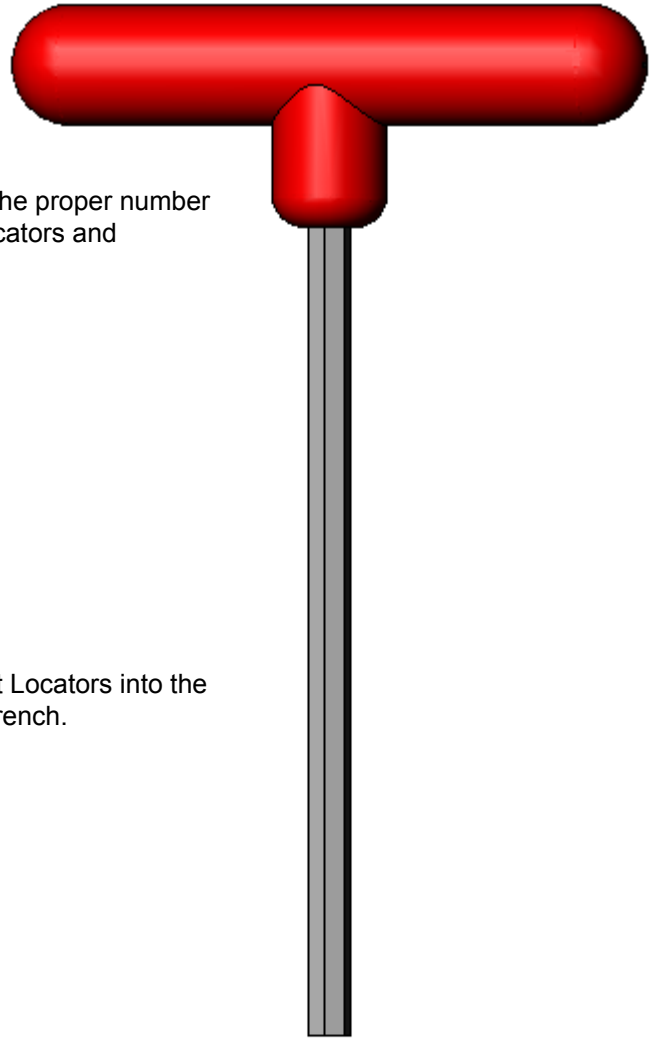
3

Load vise over the Speedilok™ Smart Locators and onto the baseplate.



4

Install Speedilok™ Receiver Locators.



LOCATING RECEIVER



LOCATING POST

SPEEDILOK™ M10 SERIES

Part Number	
	SPL-M10-1 Description: Locating Post Size: 10mm OD: 25mm ± .004mm OD Thread: M25x1.5 6g
	SPL-M10-3 Description: Locating Receiver Size: 10mm OD: 19mm ± .005mm
	SPL-M10-11 Description: Locating Post + Locating Receiver Assembly Size: 10mm
	SPL-M10-5 Description: Non-Locating Post Size: 10mm OD: 25mm ± .004mm OD Thread: M25x1.5 6g

M10 Series Coming Soon

SPEEDILOK™ M12 SERIES

Part Number	
	SPL-M12-1 Description: Locating Post Size: 12mm OD: 25mm ± .004mm OD Thread: M25x1.5 6g
	SPL-M12-3 Description: Locating Receiver Size: 12mm OD: 22mm ± .005mm
	SPL-M12-11 Description: Locating Post + Locating Receiver Assembly Size: 12mm
	SPL-M12-5 Description: Non-Locating Post Size: 12mm OD: 25mm ± .004mm OD Thread: M25x1.5 6g

AVAILABLE NOW!

SPEEDILOK™ M16 SERIES

Part Number	
	SPL-M16-1 Description: Locating Post Size: 16mm OD: 25mm ± .004mm OD Thread: M25x1.5 6g
	SPL-M16-3 Description: Locating Receiver Size: 16mm OD: 28mm ± .005mm
	SPL-M16-11 Description: Locating Post + Locating Receiver Assembly Size: 16mm
	SPL-M16-5 Description: Non-Locating Post Size: 16mm OD: 25mm ± .004mm OD Thread: M25x1.5 6g

M16 Series Coming Soon



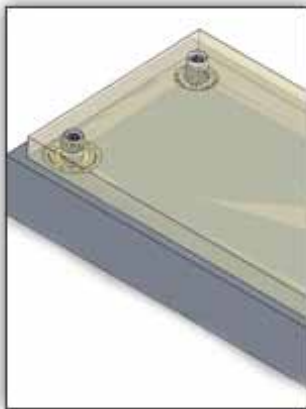
NEXT GENERATION TOOLING



ZIPFIXTURE™ QUICK CHANGE COMPONENTS

Overview

Combine the holding power of Invert-A-Bolt™ fasteners with the locating capability of bushing/ pins to get a low cost, high precision, totally un-obstructed, quick change setup. Are you having trouble getting a quick-change mounting system that's affordable? Why not try the ZipFixture™* low-cost alternative. Accuracy is not compromised and is significantly lower cost.



- Compare to Carr-Lane, Schunk, & Big Kaiser Zero Point Mounting Systems at 96% lower cost
- Equivalent Zero-Point Mounting system costs approx. \$1450** per locator
- Compare to Jergens Ball Lock™ Mounting System at 60% lower cost and more flexibility
- Equivalent Jergens system costs approx. \$130*** per locator
- Uses a 1.25-1.50" thick Sub-Plate
- Can be used with any thickness fixture plate .5" and up
- Absolutely no obstructions to the fixture plate
- Change fixtures in 60 seconds or less using a pneumatic wrench
- Repeatability: +/- .0004" to +/- .0008"
- Same great holding power as used in high-speed machining by Invert-A-Bolt™ fasteners
- Use to locate/hold vise setups--same great holding power as used in high-speed machining

Other Applications

Hold and locate quick change plates, vises, and tooling setups.

*Patent Pending

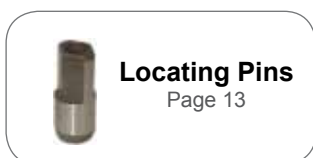
**Estimated from Jergens® on-line catalog for 13mm or 16mm configuration, face mounted

***Estimated from Carr-Lane Kit Components List® on-line catalog

To make your own ZipFixture, simply purchase the applicable number of fasteners, locating pins, and locating bushings.



+



+

